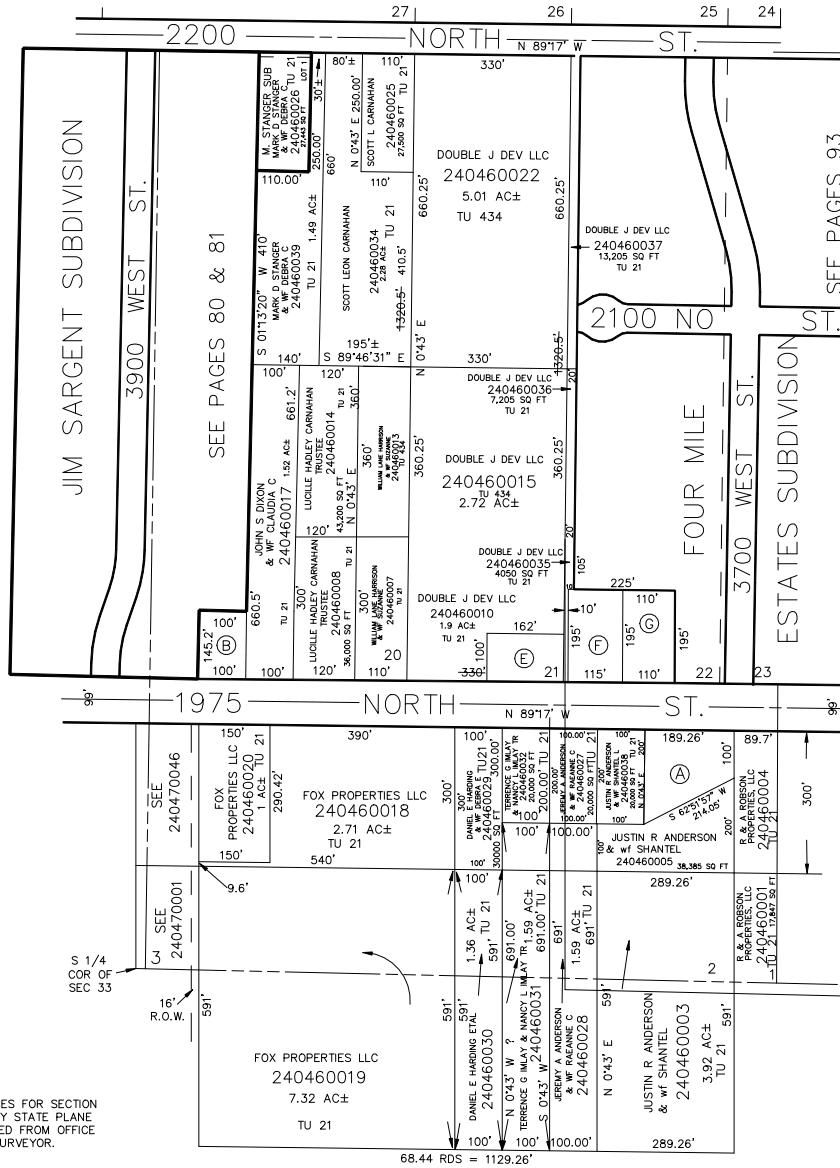


PLAIN CITY
LOTS 1, 2 & 20 TO 23, PLAT B

TAXING UNIT: 21,339,434

SCALE 1" = 200'

SEE PAGE 50



SEE PAGE 47

SEE PAGES 80 & 81

SEE PAGES 93

SEE BOOK 19
PAGE 35

MIKE L'ANDRUM
240460024
28,398 SQ FT
TU 21

KURT R NIELSON & WF
240460023
14,520 SQ FT
TU 21

DOUBLE J DEV LLC
240460009
TU 21

JOHN CAMPBELL & WF LILLIAN
240460016
22,423 SQ FT
TU 21

JALENE SMITH
240460021
21,450 SQ FT
TU 21

BEARINGS & DISTANCES FOR SECTION LINES, DETERMINED BY STATE PLANE COORDINATES RECEIVED FROM OFFICE OF WEBER COUNTY SURVEYOR.

SEE ORIGINAL DEDICATION PLAT OF PLAIN CITY IN BOOK 5, PAGE 80 OF RECORDS.

SEE BOOK 15

PAGE 10